





Search Addresses



111

RIVER RD

GLENVIEW AVE

1

GLENGREST DR

2

ROUND HILL RD

00 200

**MH Corbin Traffic Analyzer Study
Computer Generated Summary Report
City: Louisville
Street: Glenview Avenue
Location: 4314 Glenview Avenue**

A study of vehicle traffic was conducted with the device having serial number 400646. The study was done in the Northbound lane at Glenview Avenue in Louisville, KY in Jefferson county. The study began on 02/03/2021 at 12:30 PM and concluded on 02/05/2021 at 12:30 PM, lasting a total of 48.00 hours. Traffic statistics were recorded in 60 minute time periods. The total recorded volume showed 626 vehicles passed through the location with a peak volume of 34 on 02/05/2021 at [08:30 AM-09:30 AM] and a minimum volume of 0 on 02/03/2021 at [10:30 PM-11:30 PM]. The AADT count for this study was 313.

SPEED

Chart 1 lists the values of the speed bins and the total traffic volume for each bin. At least half the vehicles were traveling in the 9 MPH range or lower. The average speed for all classified vehicles was 21 MPH with 51.62% vehicles exceeding the posted speed of 25 MPH. 5.03% percent of the total vehicles were traveling in excess of 55 MPH. The mode speed for this traffic study was 9MPH and the 85th percentile was 34.24 MPH.

< to 9	10 to 14	15 to 19	20 to 24	25 to 29	30 to 34	35 to 39	40 to >							
195	9	24	70	125	118	44	31							

CHART 1

CLASSIFICATION

Chart 2 lists the values of the classification bins and the total traffic volume accumulated for each bin. Most of the vehicles classified during the study were Passenger Vehicles. The number of Passenger Vehicles in the study was 453 which represents 74 percent of the total classified vehicles. The number of Vans & Pickups in the study was 125 which represents 20 percent of the total classified vehicles. The number of Busses & Trucks in the study was 24 which represents 4 percent of the total classified vehicles. The number of Tractor Trailers in the study was 14 which represents 2 percent of the total classified vehicles.

< to 17	18 to 20	21 to 23	24 to 27	28 to 31	32 to 37	38 to 43	44 to >							
453	90	35	15	5	6	7	5							

CHART 2

HEADWAY

During the peak traffic period, on 02/05/2021 at [08:30 AM-09:30 AM] the average headway between vehicles was 102.857 seconds. During the slowest traffic period, on 02/03/2021 at [10:30 PM-11:30 PM] the average headway between vehicles was 3600 seconds.

WEATHER

The roadway surface temperature over the period of the study varied between 32.00 and 489.00 degrees F.

**MH Corbin Traffic Analyzer Study
Computer Generated Summary Report
City: Louisville
Street: Glenview Avenue**

A study of vehicle traffic was conducted with the device having serial number 300890. The study was done in the Northbound lane at Glenview Avenue in Louisville, KY in Jefferson county. The study began on 02/03/2021 at 12:30 PM and concluded on 02/05/2021 at 12:30 PM, lasting a total of 48.00 hours. Traffic statistics were recorded in 60 minute time periods. The total recorded volume showed 712 vehicles passed through the location with a peak volume of 43 on 02/05/2021 at [11:30 AM-12:30 PM] and a minimum volume of 0 on 02/04/2021 at [11:30 PM-12:30 AM]. The AADT count for this study was 356.

SPEED

Chart 1 lists the values of the speed bins and the total traffic volume for each bin. At least half the vehicles were traveling in the 20 - 25 MPH range or lower. The average speed for all classified vehicles was 20 MPH with 23.26% vehicles exceeding the posted speed of 25 MPH. 5.06% percent of the total vehicles were traveling in excess of 55 MPH. The mode speed for this traffic study was 20MPH and the 85th percentile was 28.56 MPH.

< to 9	10 to 14	15 to 19	20 to 24	25 to 29	30 to 34	35 to 39	40 to >							
60	88	159	178	73	24	18	32							

CHART 1

CLASSIFICATION

Chart 2 lists the values of the classification bins and the total traffic volume accumulated for each bin. Most of the vehicles classified during the study were Passenger Vehicles. The number of Passenger Vehicles in the study was 485 which represents 77 percent of the total classified vehicles. The number of Vans & Pickups in the study was 98 which represents 16 percent of the total classified vehicles. The number of Busses & Trucks in the study was 31 which represents 5 percent of the total classified vehicles. The number of Tractor Trailers in the study was 16 which represents 3 percent of the total classified vehicles.

< to 17	18 to 20	21 to 23	24 to 27	28 to 31	32 to 37	38 to 43	44 to >							
485	69	29	14	12	7	6	10							

CHART 2

HEADWAY

During the peak traffic period, on 02/05/2021 at [11:30 AM-12:30 PM] the average headway between vehicles was 81.818 seconds. During the slowest traffic period, on 02/04/2021 at [11:30 PM-12:30 AM] the average headway between vehicles was 3600 seconds.

WEATHER

The roadway surface temperature over the period of the study varied between 32.00 and 489.00 degrees F.

MH Corbin Traffic Analyzer Study
Computer Generated Summary Report
City: Louisville
Street: Glenview Avenue

A study of vehicle traffic was conducted with the device having serial number 303267. The study was done in the Southbound lane at Glenview Avenue in Louisville, KY in Jefferson county. The study began on 02/03/2021 at 12:30 PM and concluded on 02/05/2021 at 12:30 PM, lasting a total of 48.00 hours. Traffic statistics were recorded in 60 minute time periods. The total recorded volume showed 795 vehicles passed through the location with a peak volume of 45 on 02/05/2021 at [10:30 AM-11:30 AM] and a minimum volume of 0 on 02/04/2021 at [11:30 PM-12:30 AM]. The AADT count for this study was 398.

SPEED

Chart 1 lists the values of the speed bins and the total traffic volume for each bin. At least half the vehicles were traveling in the 20 - 25 MPH range or lower. The average speed for all classified vehicles was 25 MPH with 48.48% vehicles exceeding the posted speed of 25 MPH. 9.42% percent of the total vehicles were traveling in excess of 55 MPH. The mode speed for this traffic study was 20MPH and the 85th percentile was 35.44 MPH.

< to 9	10 to 14	15 to 19	20 to 24	25 to 29	30 to 34	35 to 39	40 to >							
40	47	128	157	146	91	45	68							

CHART 1

CLASSIFICATION

Chart 2 lists the values of the classification bins and the total traffic volume accumulated for each bin. Most of the vehicles classified during the study were Passenger Vehicles. The number of Passenger Vehicles in the study was 343 which represents 48 percent of the total classified vehicles. The number of Vans & Pickups in the study was 251 which represents 35 percent of the total classified vehicles. The number of Busses & Trucks in the study was 85 which represents 12 percent of the total classified vehicles. The number of Tractor Trailers in the study was 41 which represents 6 percent of the total classified vehicles.

< to 17	18 to 20	21 to 23	24 to 27	28 to 31	32 to 37	38 to 43	44 to >							
343	180	71	47	26	16	8	31							

CHART 2

HEADWAY

During the peak traffic period, on 02/05/2021 at [10:30 AM-11:30 AM] the average headway between vehicles was 78.261 seconds. During the slowest traffic period, on 02/04/2021 at [11:30 PM-12:30 AM] the average headway between vehicles was 3600 seconds.

WEATHER

The roadway surface temperature over the period of the study varied between 32.00 and 489.00 degrees F.



**MH Corbin Traffic Analyzer Study
Computer Generated Summary Report
City: Louisville
Street: Glenview Avenue**

A study of vehicle traffic was conducted with the device having serial number 300890. The study was done in the Northbound lane at Glenview Avenue in Louisville, KY in Jefferson county. The study began on 02/23/2021 at 01:30 PM and concluded on 02/25/2021 at 01:30 PM, lasting a total of 48.00 hours. Traffic statistics were recorded in 60 minute time periods. The total recorded volume showed 699 vehicles passed through the location with a peak volume of 41 on 02/25/2021 at [11:30 AM-12:30 PM] and a minimum volume of 0 on 02/23/2021 at [10:30 PM-11:30 PM]. The AADT count for this study was 350.

SPEED

Chart 1 lists the values of the speed bins and the total traffic volume for each bin. At least half the vehicles were traveling in the 20 - 25 MPH range or lower. The average speed for all classified vehicles was 23 MPH with 36.39% vehicles exceeding the posted speed of 25 MPH. 2.75% percent of the total vehicles were traveling in excess of 55 MPH. The mode speed for this traffic study was 20MPH and the 85th percentile was 29.73 MPH.

< to 9	10 to 14	15 to 19	20 to 24	25 to 29	30 to 34	35 to 39	40 to >							
42	64	84	226	147	58	15	18							

CHART 1

CLASSIFICATION

Chart 2 lists the values of the classification bins and the total traffic volume accumulated for each bin. Most of the vehicles classified during the study were Passenger Vehicles. The number of Passenger Vehicles in the study was 515 which represents 79 percent of the total classified vehicles. The number of Vans & Pickups in the study was 117 which represents 18 percent of the total classified vehicles. The number of Busses & Trucks in the study was 16 which represents 2 percent of the total classified vehicles. The number of Tractor Trailers in the study was 6 which represents 1 percent of the total classified vehicles.

< to 17	18 to 20	21 to 23	24 to 27	28 to 31	32 to 37	38 to 43	44 to >							
515	93	24	13	2	2	3	2							

CHART 2

HEADWAY

During the peak traffic period, on 02/25/2021 at [11:30 AM-12:30 PM] the average headway between vehicles was 85.714 seconds. During the slowest traffic period, on 02/23/2021 at [10:30 PM-11:30 PM] the average headway between vehicles was 3600 seconds.

WEATHER

The roadway surface temperature over the period of the study varied between 32.00 and 68.00 degrees F.

**MH Corbin Traffic Analyzer Study
Computer Generated Summary Report
City: Louisville
Street: Glenview Avenue**

A study of vehicle traffic was conducted with the device having serial number 303267. The study was done in the Southbound lane at Glenview Avenue in Louisville, KY in Jefferson county. The study began on 02/23/2021 at 01:30 PM and concluded on 02/25/2021 at 01:30 PM, lasting a total of 48.00 hours. Traffic statistics were recorded in 60 minute time periods. The total recorded volume showed 458 vehicles passed through the location with a peak volume of 40 on 02/24/2021 at [11:30 AM-12:30 PM] and a minimum volume of 0 on 02/23/2021 at [09:30 PM-10:30 PM]. The AADT count for this study was 229.

SPEED

Chart 1 lists the values of the speed bins and the total traffic volume for each bin. At least half the vehicles were traveling in the 25 - 30 MPH range or lower. The average speed for all classified vehicles was 29 MPH with 71.14% vehicles exceeding the posted speed of 25 MPH. 12.44% percent of the total vehicles were traveling in excess of 55 MPH. The mode speed for this traffic study was 25MPH and the 85th percentile was 38.47 MPH.

< to 9	10 to 14	15 to 19	20 to 24	25 to 29	30 to 34	35 to 39	40 to >							
4	9	22	81	115	85	36	50							

CHART 1

CLASSIFICATION

Chart 2 lists the values of the classification bins and the total traffic volume accumulated for each bin. Most of the vehicles classified during the study were Passenger Vehicles. The number of Passenger Vehicles in the study was 215 which represents 53 percent of the total classified vehicles. The number of Vans & Pickups in the study was 135 which represents 34 percent of the total classified vehicles. The number of Busses & Trucks in the study was 41 which represents 10 percent of the total classified vehicles. The number of Tractor Trailers in the study was 11 which represents 3 percent of the total classified vehicles.

< to 17	18 to 20	21 to 23	24 to 27	28 to 31	32 to 37	38 to 43	44 to >							
215	94	41	25	11	6	5	5							

CHART 2

HEADWAY

During the peak traffic period, on 02/24/2021 at [11:30 AM-12:30 PM] the average headway between vehicles was 87.805 seconds. During the slowest traffic period, on 02/23/2021 at [09:30 PM-10:30 PM] the average headway between vehicles was 3600 seconds.

WEATHER

The roadway surface temperature over the period of the study varied between 32.00 and 63.00 degrees F.

**MH Corbin Traffic Analyzer Study
Computer Generated Summary Report
City: Louisville
Street: Glenview Avenue**

A study of vehicle traffic was conducted with the device having serial number 403881. The study was done in the Southbound lane at Glenview Avenue in Louisville, KY in Jefferson county. The study began on 02/23/2021 at 01:30 PM and concluded on 02/25/2021 at 01:30 PM, lasting a total of 48.00 hours. Traffic statistics were recorded in 60 minute time periods. The total recorded volume showed 729 vehicles passed through the location with a peak volume of 50 on 02/24/2021 at [11:30 AM-12:30 PM] and a minimum volume of 0 on 02/23/2021 at [11:30 PM-12:30 AM]. The AADT count for this study was 365.

SPEED

Chart 1 lists the values of the speed bins and the total traffic volume for each bin. At least half the vehicles were traveling in the 25 - 30 MPH range or lower. The average speed for all classified vehicles was 29 MPH with 78.20% vehicles exceeding the posted speed of 25 MPH. 5.52% percent of the total vehicles were traveling in excess of 55 MPH. The mode speed for this traffic study was 25MPH and the 85th percentile was 34.13 MPH.

< to 9	10 to 14	15 to 19	20 to 24	25 to 29	30 to 34	35 to 39	40 to >							
2	6	26	116	286	179	35	38							

CHART 1

CLASSIFICATION

Chart 2 lists the values of the classification bins and the total traffic volume accumulated for each bin. Most of the vehicles classified during the study were Passenger Vehicles. The number of Passenger Vehicles in the study was 416 which represents 60 percent of the total classified vehicles. The number of Vans & Pickups in the study was 226 which represents 33 percent of the total classified vehicles. The number of Busses & Trucks in the study was 30 which represents 4 percent of the total classified vehicles. The number of Tractor Trailers in the study was 14 which represents 2 percent of the total classified vehicles.

< to 17	18 to 20	21 to 23	24 to 27	28 to 31	32 to 37	38 to 43	44 to >							
416	188	38	6	17	10	4	9							

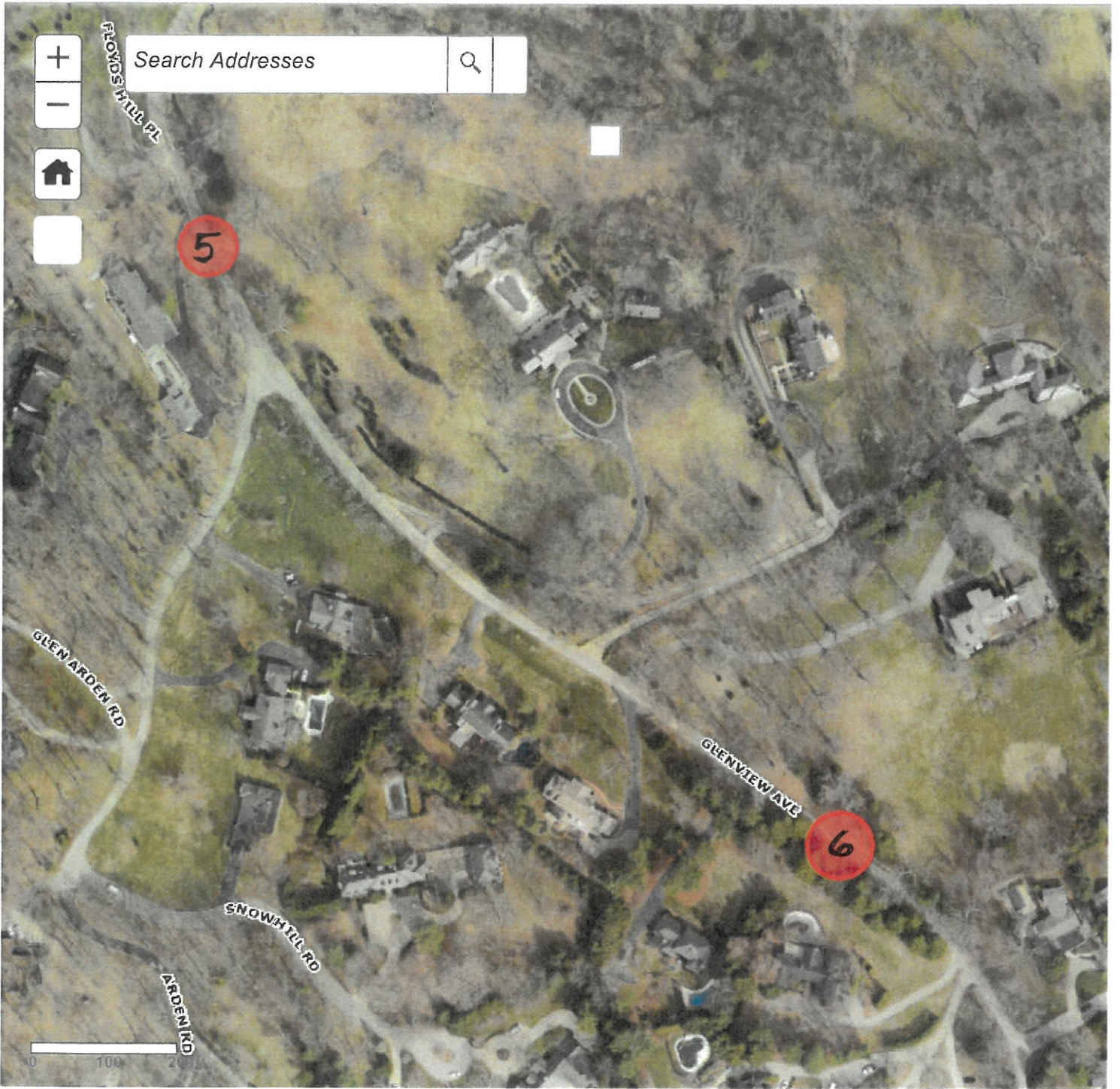
CHART 2

HEADWAY

During the peak traffic period, on 02/24/2021 at [11:30 AM-12:30 PM] the average headway between vehicles was 70.588 seconds. During the slowest traffic period, on 02/23/2021 at [11:30 PM-12:30 AM] the average headway between vehicles was 3600 seconds.

WEATHER

The roadway surface temperature over the period of the study varied between 34.00 and 72.00 degrees F.



**MH Corbin Traffic Analyzer Study
Computer Generated Summary Report
City: Louisville
Street: Glenview Avenue
Location: 4000 Glenview Avenue**

A study of vehicle traffic was conducted with the device having serial number 300890. The study was done in the Northbound lane at Glenview Avenue in Louisville, KY in Jefferson county. The study began on 03/02/2021 at 01:30 PM and concluded on 03/04/2021 at 01:30 PM, lasting a total of 48.00 hours. Traffic statistics were recorded in 60 minute time periods. The total recorded volume showed 274 vehicles passed through the location with a peak volume of 17 on 03/03/2021 at [09:30 AM-10:30 AM] and a minimum volume of 0 on 03/02/2021 at [09:30 PM-10:30 PM]. The AADT count for this study was 137.

SPEED

Chart 1 lists the values of the speed bins and the total traffic volume for each bin. At least half the vehicles were traveling in the 20 - 25 MPH range or lower. The average speed for all classified vehicles was 24 MPH with 47.21% vehicles exceeding the posted speed of 25 MPH. 7.73% percent of the total vehicles were traveling in excess of 55 MPH. The mode speed for this traffic study was 20MPH and the 85th percentile was 33.27 MPH.

< to 9	10 to 14	15 to 19	20 to 24	25 to 29	30 to 34	35 to 39	40 to >							
10	21	33	59	58	26	8	18							

CHART 1

CLASSIFICATION

Chart 2 lists the values of the classification bins and the total traffic volume accumulated for each bin. Most of the vehicles classified during the study were Passenger Vehicles. The number of Passenger Vehicles in the study was 178 which represents 76 percent of the total classified vehicles. The number of Vans & Pickups in the study was 35 which represents 15 percent of the total classified vehicles. The number of Busses & Trucks in the study was 14 which represents 6 percent of the total classified vehicles. The number of Tractor Trailers in the study was 6 which represents 3 percent of the total classified vehicles.

< to 17	18 to 20	21 to 23	24 to 27	28 to 31	32 to 37	38 to 43	44 to >							
178	26	9	6	6	3	1	4							

CHART 2

HEADWAY

During the peak traffic period, on 03/03/2021 at [09:30 AM-10:30 AM] the average headway between vehicles was 200 seconds. During the slowest traffic period, on 03/02/2021 at [09:30 PM-10:30 PM] the average headway between vehicles was 3600 seconds.

WEATHER

The roadway surface temperature over the period of the study varied between 34.00 and 77.00 degrees F.

**MH Corbin Traffic Analyzer Study
Computer Generated Summary Report
City: Louisville
Street: Glenview Avenue
Location: 4000 Glenview Avenue**

A study of vehicle traffic was conducted with the device having serial number 303267. The study was done in the Southbound lane at Glenview Avenue in Louisville, KY in Jefferson county. The study began on 03/02/2021 at 01:30 PM and concluded on 03/04/2021 at 01:30 PM, lasting a total of 48.00 hours. Traffic statistics were recorded in 60 minute time periods. The total recorded volume showed 252 vehicles passed through the location with a peak volume of 19 on 03/03/2021 at [09:30 AM-10:30 AM] and a minimum volume of 0 on 03/02/2021 at [10:30 PM-11:30 PM]. The AADT count for this study was 126.

SPEED

Chart 1 lists the values of the speed bins and the total traffic volume for each bin. At least half the vehicles were traveling in the 20 - 25 MPH range or lower. The average speed for all classified vehicles was 27 MPH with 53.77% vehicles exceeding the posted speed of 25 MPH. 15.09% percent of the total vehicles were traveling in excess of 55 MPH. The mode speed for this traffic study was 20MPH and the 85th percentile was greater than 40.00 MPH.

< to 9	10 to 14	15 to 19	20 to 24	25 to 29	30 to 34	35 to 39	40 to >							
9	10	23	56	42	23	17	32							

CHART 1

CLASSIFICATION

Chart 2 lists the values of the classification bins and the total traffic volume accumulated for each bin. Most of the vehicles classified during the study were Passenger Vehicles. The number of Passenger Vehicles in the study was 103 which represents 49 percent of the total classified vehicles. The number of Vans & Pickups in the study was 78 which represents 37 percent of the total classified vehicles. The number of Busses & Trucks in the study was 17 which represents 8 percent of the total classified vehicles. The number of Tractor Trailers in the study was 12 which represents 6 percent of the total classified vehicles.

< to 17	18 to 20	21 to 23	24 to 27	28 to 31	32 to 37	38 to 43	44 to >							
103	54	24	13	2	3	3	10							

CHART 2

HEADWAY

During the peak traffic period, on 03/03/2021 at [09:30 AM-10:30 AM] the average headway between vehicles was 180 seconds. During the slowest traffic period, on 03/02/2021 at [10:30 PM-11:30 PM] the average headway between vehicles was 3600 seconds.

WEATHER

The roadway surface temperature over the period of the study varied between 34.00 and 77.00 degrees F.

**MH Corbin Traffic Analyzer Study
Computer Generated Summary Report
City: Louisville
Street: Glenview Avenue**

A study of vehicle traffic was conducted with the device having serial number 403879. The study was done in the Northbound lane at Glenview Avenue in Louisville, KY in Jefferson county. The study began on 03/02/2021 at 01:30 PM and concluded on 03/04/2021 at 01:30 PM, lasting a total of 48.00 hours. Traffic statistics were recorded in 60 minute time periods. The total recorded volume showed 527 vehicles passed through the location with a peak volume of 35 on 03/03/2021 at [02:30 PM-03:30 PM] and a minimum volume of 0 on 03/02/2021 at [11:30 PM-12:30 AM]. The AADT count for this study was 264.

SPEED

Chart 1 lists the values of the speed bins and the total traffic volume for each bin. At least half the vehicles were traveling in the 25 - 30 MPH range or lower. The average speed for all classified vehicles was 27 MPH with 60.12% vehicles exceeding the posted speed of 25 MPH. 13.64% percent of the total vehicles were traveling in excess of 55 MPH. The mode speed for this traffic study was 25MPH and the 85th percentile was 38.41 MPH.

< to 9	10 to 14	15 to 19	20 to 24	25 to 29	30 to 34	35 to 39	40 to >							
4	15	43	131	138	65	22	66							

CHART 1

CLASSIFICATION

Chart 2 lists the values of the classification bins and the total traffic volume accumulated for each bin. Most of the vehicles classified during the study were Passenger Vehicles. The number of Passenger Vehicles in the study was 259 which represents 54 percent of the total classified vehicles. The number of Vans & Pickups in the study was 166 which represents 34 percent of the total classified vehicles. The number of Busses & Trucks in the study was 29 which represents 6 percent of the total classified vehicles. The number of Tractor Trailers in the study was 29 which represents 6 percent of the total classified vehicles.

< to 17	18 to 20	21 to 23	24 to 27	28 to 31	32 to 37	38 to 43	44 to >							
259	133	33	9	12	12	9	17							

CHART 2

HEADWAY

During the peak traffic period, on 03/03/2021 at [02:30 PM-03:30 PM] the average headway between vehicles was 100 seconds. During the slowest traffic period, on 03/02/2021 at [11:30 PM-12:30 AM] the average headway between vehicles was 3600 seconds.

WEATHER

The roadway surface temperature over the period of the study varied between 34.00 and 72.00 degrees F.

MH Corbin Traffic Analyzer Study
Computer Generated Summary Report
City: Louisville
Street: Glenview Avenue

A study of vehicle traffic was conducted with the device having serial number 403881. The study was done in the Southbound lane at Glenview Avenue in Louisville, KY in Jefferson county. The study began on 03/02/2021 at 01:30 PM and concluded on 03/04/2021 at 01:30 PM, lasting a total of 48.00 hours. Traffic statistics were recorded in 60 minute time periods. The total recorded volume showed 589 vehicles passed through the location with a peak volume of 35 on 03/03/2021 at [02:30 PM-03:30 PM] and a minimum volume of 0 on 03/02/2021 at [11:30 PM-12:30 AM]. The AADT count for this study was 295.

SPEED

Chart 1 lists the values of the speed bins and the total traffic volume for each bin. At least half the vehicles were traveling in the 25 - 30 MPH range or lower. The average speed for all classified vehicles was 28 MPH with 70.65% vehicles exceeding the posted speed of 25 MPH. 6.52% percent of the total vehicles were traveling in excess of 55 MPH. The mode speed for this traffic study was 25MPH and the 85th percentile was 34.79 MPH.

< to 9	10 to 14	15 to 19	20 to 24	25 to 29	30 to 34	35 to 39	40 to >							
6	8	31	117	191	121	42	36							

CHART 1

CLASSIFICATION

Chart 2 lists the values of the classification bins and the total traffic volume accumulated for each bin. Most of the vehicles classified during the study were Passenger Vehicles. The number of Passenger Vehicles in the study was 305 which represents 55 percent of the total classified vehicles. The number of Vans & Pickups in the study was 166 which represents 36 percent of the total classified vehicles. The number of Busses & Trucks in the study was 30 which represents 5 percent of the total classified vehicles. The number of Tractor Trailers in the study was 9 which represents 5 percent of the total classified vehicles.

< to 17	18 to 20	21 to 23	24 to 27	28 to 31	32 to 37	38 to 43	44 to >							
305	166	30	9	9	12	13	8							

CHART 2

HEADWAY

During the peak traffic period, on 03/03/2021 at [02:30 PM-03:30 PM] the average headway between vehicles was 100 seconds. During the slowest traffic period, on 03/02/2021 at [11:30 PM-12:30 AM] the average headway between vehicles was 3600 seconds.

WEATHER

The roadway surface temperature over the period of the study varied between 32.00 and 48.00 degrees F.



**MH Corbin Traffic Analyzer Study
Computer Generated Summary Report
City: Louisville
Street: Orion Road
Location: 5803 Orion Road**

A study of vehicle traffic was conducted with the device having serial number 403879. The study was done in the Eastbound lane at Orion Road in Louisville, KY in Jefferson county. The study began on 03/09/2021 at 01:30 PM and concluded on 03/11/2021 at 01:30 PM, lasting a total of 48.00 hours. Traffic statistics were recorded in 60 minute time periods. The total recorded volume showed 288 vehicles passed through the location with a peak volume of 22 on 03/10/2021 at [11:30 AM-12:30 PM] and a minimum volume of 0 on 03/09/2021 at [11:30 PM-12:30 AM]. The AADT count for this study was 144.

SPEED

Chart 1 lists the values of the speed bins and the total traffic volume for each bin. At least half the vehicles were traveling in the 25 - 30 MPH range or lower. The average speed for all classified vehicles was 29 MPH with 79.20% vehicles exceeding the posted speed of 25 MPH. 5.47% percent of the total vehicles were traveling in excess of 55 MPH. The mode speed for this traffic study was 25MPH and the 85th percentile was 34.01 MPH.

< to 9	10 to 14	15 to 19	20 to 24	25 to 29	30 to 34	35 to 39	40 to >							
1	1	13	42	106	86	10	15							

CHART 1

CLASSIFICATION

Chart 2 lists the values of the classification bins and the total traffic volume accumulated for each bin. Most of the vehicles classified during the study were Passenger Vehicles. The number of Passenger Vehicles in the study was 143 which represents 52 percent of the total classified vehicles. The number of Vans & Pickups in the study was 114 which represents 42 percent of the total classified vehicles. The number of Busses & Trucks in the study was 10 which represents 4 percent of the total classified vehicles. The number of Tractor Trailers in the study was 7 which represents 3 percent of the total classified vehicles.

< to 17	18 to 20	21 to 23	24 to 27	28 to 31	32 to 37	38 to 43	44 to >							
143	100	14	5	3	4	3	2							

CHART 2

HEADWAY

During the peak traffic period, on 03/10/2021 at [11:30 AM-12:30 PM] the average headway between vehicles was 156.522 seconds. During the slowest traffic period, on 03/09/2021 at [11:30 PM-12:30 AM] the average headway between vehicles was 3600 seconds.

WEATHER

The roadway surface temperature over the period of the study varied between 50.00 and 82.00 degrees F.

**MH Corbin Traffic Analyzer Study
Computer Generated Summary Report
City: Louisville
Street: Orion Road
Location: 5308 Orion Road**

A study of vehicle traffic was conducted with the device having serial number 403881. The study was done in the Westbound lane at Orion Road in Louisville, KY in Jefferson county. The study began on 03/09/2021 at 01:30 PM and concluded on 03/11/2021 at 01:30 PM, lasting a total of 48.00 hours. Traffic statistics were recorded in 60 minute time periods. The total recorded volume showed 356 vehicles passed through the location with a peak volume of 23 on 03/11/2021 at [12:30 PM-01:30 PM] and a minimum volume of 0 on 03/09/2021 at [10:30 PM-11:30 PM]. The AADT count for this study was 178.

SPEED

Chart 1 lists the values of the speed bins and the total traffic volume for each bin. At least half the vehicles were traveling in the 25 - 30 MPH range or lower. The average speed for all classified vehicles was 29 MPH with 80.17% vehicles exceeding the posted speed of 25 MPH. 2.62% percent of the total vehicles were traveling in excess of 55 MPH. The mode speed for this traffic study was 25MPH and the 85th percentile was 34.18 MPH.

< to 9	10 to 14	15 to 19	20 to 24	25 to 29	30 to 34	35 to 39	40 to >							
2	3	16	47	136	104	26	9							

CHART 1

CLASSIFICATION

Chart 2 lists the values of the classification bins and the total traffic volume accumulated for each bin. Most of the vehicles classified during the study were Passenger Vehicles. The number of Passenger Vehicles in the study was 186 which represents 54 percent of the total classified vehicles. The number of Vans & Pickups in the study was 142 which represents 41 percent of the total classified vehicles. The number of Busses & Trucks in the study was 10 which represents 3 percent of the total classified vehicles. The number of Tractor Trailers in the study was 5 which represents 1 percent of the total classified vehicles.

< to 17	18 to 20	21 to 23	24 to 27	28 to 31	32 to 37	38 to 43	44 to >							
186	120	22	1	5	4	0	5							

CHART 2

HEADWAY

During the peak traffic period, on 03/11/2021 at [12:30 PM-01:30 PM] the average headway between vehicles was 150 seconds. During the slowest traffic period, on 03/09/2021 at [10:30 PM-11:30 PM] the average headway between vehicles was 3600 seconds.

WEATHER

The roadway surface temperature over the period of the study varied between 46.00 and 75.00 degrees F.

**MH Corbin Traffic Analyzer Study
Computer Generated Summary Report
City: Louisville
Street: Orion Road
Location: 5812 Orion Road**

A study of vehicle traffic was conducted with the device having serial number 300890. The study was done in the Eastbound lane at Orion Road in Louisville, KY in Jefferson county. The study began on 03/09/2021 at 01:30 PM and concluded on 03/11/2021 at 01:30 PM, lasting a total of 48.00 hours. Traffic statistics were recorded in 60 minute time periods. The total recorded volume showed 318 vehicles passed through the location with a peak volume of 22 on 03/10/2021 at [10:30 AM-11:30 AM] and a minimum volume of 0 on 03/09/2021 at [11:30 PM-12:30 AM]. The AADT count for this study was 159.

SPEED

Chart 1 lists the values of the speed bins and the total traffic volume for each bin. At least half the vehicles were traveling in the 20 - 25 MPH range or lower. The average speed for all classified vehicles was 24 MPH with 48.93% vehicles exceeding the posted speed of 25 MPH. 9.29% percent of the total vehicles were traveling in excess of 55 MPH. The mode speed for this traffic study was 20MPH and the 85th percentile was 34.19 MPH.

< to 9	10 to 14	15 to 19	20 to 24	25 to 29	30 to 34	35 to 39	40 to >							
25	19	33	66	63	37	11	26							

CHART 1

CLASSIFICATION

Chart 2 lists the values of the classification bins and the total traffic volume accumulated for each bin. Most of the vehicles classified during the study were Passenger Vehicles. The number of Passenger Vehicles in the study was 217 which represents 78 percent of the total classified vehicles. The number of Vans & Pickups in the study was 40 which represents 14 percent of the total classified vehicles. The number of Busses & Trucks in the study was 13 which represents 5 percent of the total classified vehicles. The number of Tractor Trailers in the study was 10 which represents 4 percent of the total classified vehicles.

< to 17	18 to 20	21 to 23	24 to 27	28 to 31	32 to 37	38 to 43	44 to >							
217	27	13	8	3	5	3	4							

CHART 2

HEADWAY

During the peak traffic period, on 03/10/2021 at [10:30 AM-11:30 AM] the average headway between vehicles was 156.522 seconds. During the slowest traffic period, on 03/09/2021 at [11:30 PM-12:30 AM] the average headway between vehicles was 3600 seconds.

WEATHER

The roadway surface temperature over the period of the study varied between 48.00 and 86.00 degrees F.

**MH Corbin Traffic Analyzer Study
Computer Generated Summary Report
City: Louisville
Street: Orion Road
Location: 5812 Orion Road**

A study of vehicle traffic was conducted with the device having serial number 303267. The study was done in the Westbound lane at Orion Road in Louisville, KY in Jefferson county. The study began on 03/09/2021 at 01:30 PM and concluded on 03/11/2021 at 01:30 PM, lasting a total of 48.00 hours. Traffic statistics were recorded in 60 minute time periods. The total recorded volume showed 498 vehicles passed through the location with a peak volume of 33 on 03/10/2021 at [11:30 AM-12:30 PM] and a minimum volume of 0 on 03/09/2021 at [08:30 PM-09:30 PM]. The AADT count for this study was 249.

SPEED

Chart 1 lists the values of the speed bins and the total traffic volume for each bin. At least half the vehicles were traveling in the 25 - 30 MPH range or lower. The average speed for all classified vehicles was 27 MPH with 63.92% vehicles exceeding the posted speed of 25 MPH. 8.69% percent of the total vehicles were traveling in excess of 55 MPH. The mode speed for this traffic study was 25MPH and the 85th percentile was 36.46 MPH.

< to 9	10 to 14	15 to 19	20 to 24	25 to 29	30 to 34	35 to 39	40 to >							
18	28	47	69	120	87	41	39							

CHART 1

CLASSIFICATION

Chart 2 lists the values of the classification bins and the total traffic volume accumulated for each bin. Most of the vehicles classified during the study were Passenger Vehicles. The number of Passenger Vehicles in the study was 232 which represents 52 percent of the total classified vehicles. The number of Vans & Pickups in the study was 117 which represents 35 percent of the total classified vehicles. The number of Busses & Trucks in the study was 42 which represents 8 percent of the total classified vehicles. The number of Tractor Trailers in the study was 21 which represents 4 percent of the total classified vehicles.

< to 17	18 to 20	21 to 23	24 to 27	28 to 31	32 to 37	38 to 43	44 to >							
232	117	42	21	10	9	7	11							

CHART 2

HEADWAY

During the peak traffic period, on 03/10/2021 at [11:30 AM-12:30 PM] the average headway between vehicles was 105.882 seconds. During the slowest traffic period, on 03/09/2021 at [08:30 PM-09:30 PM] the average headway between vehicles was 3600 seconds.

WEATHER

The roadway surface temperature over the period of the study varied between 48.00 and 82.00 degrees F.